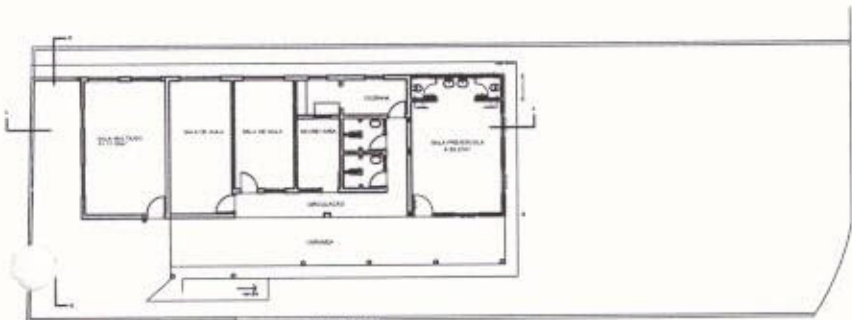
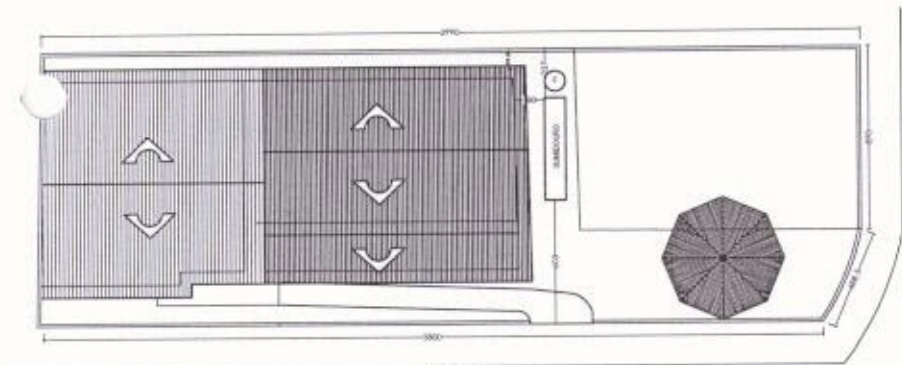
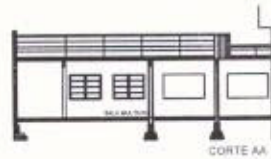


23

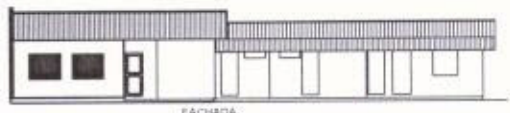
E.M.E.F. ANGELO TEDESCO



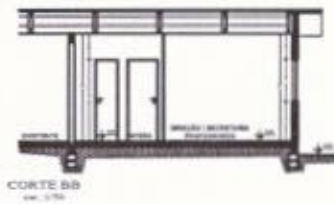
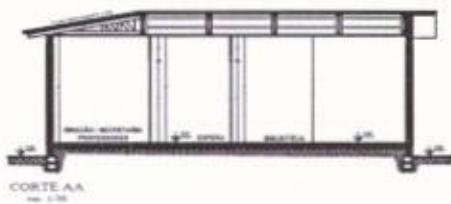
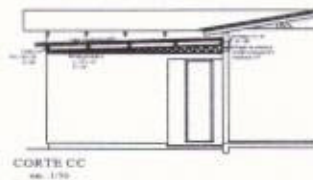
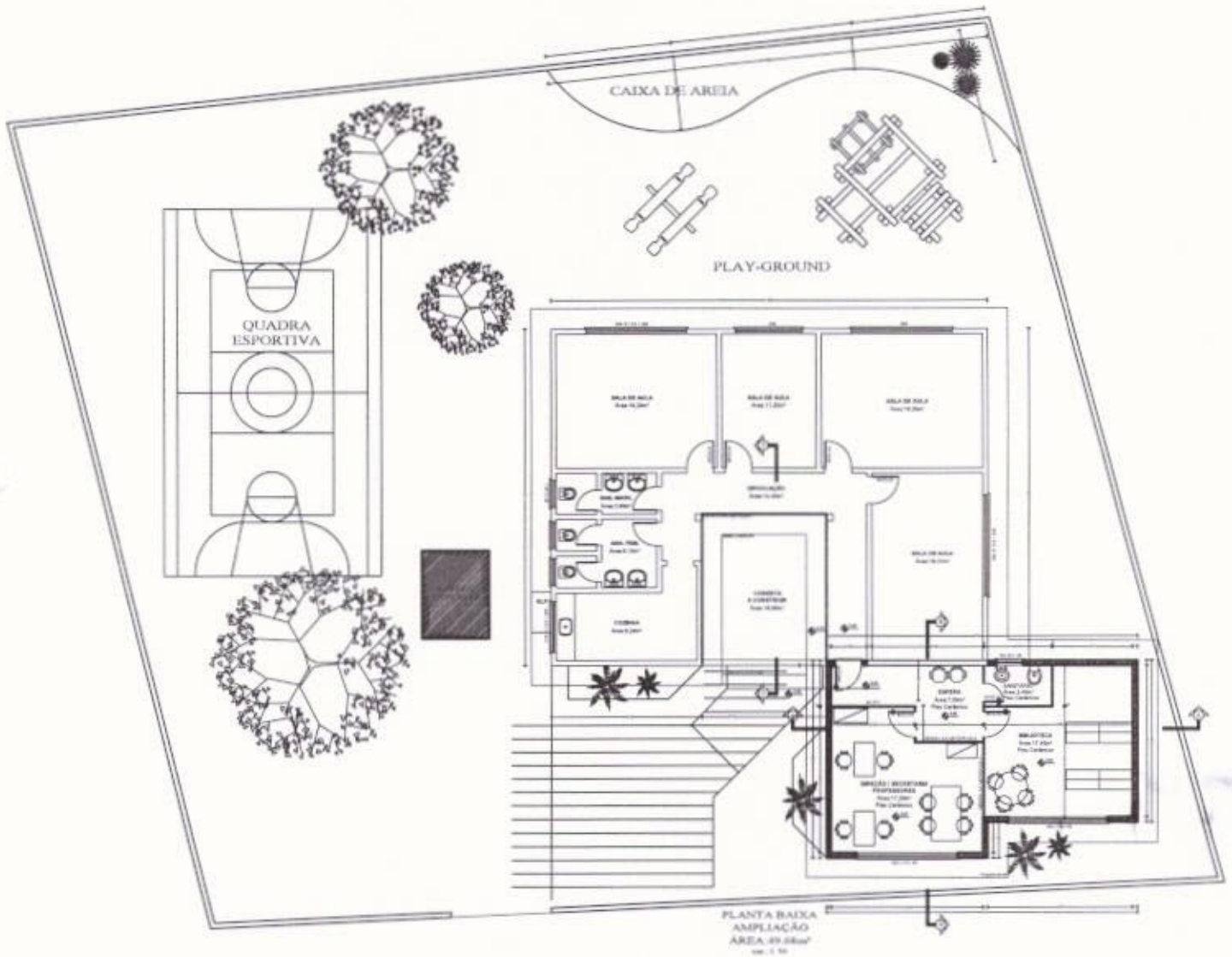
CORTE BB



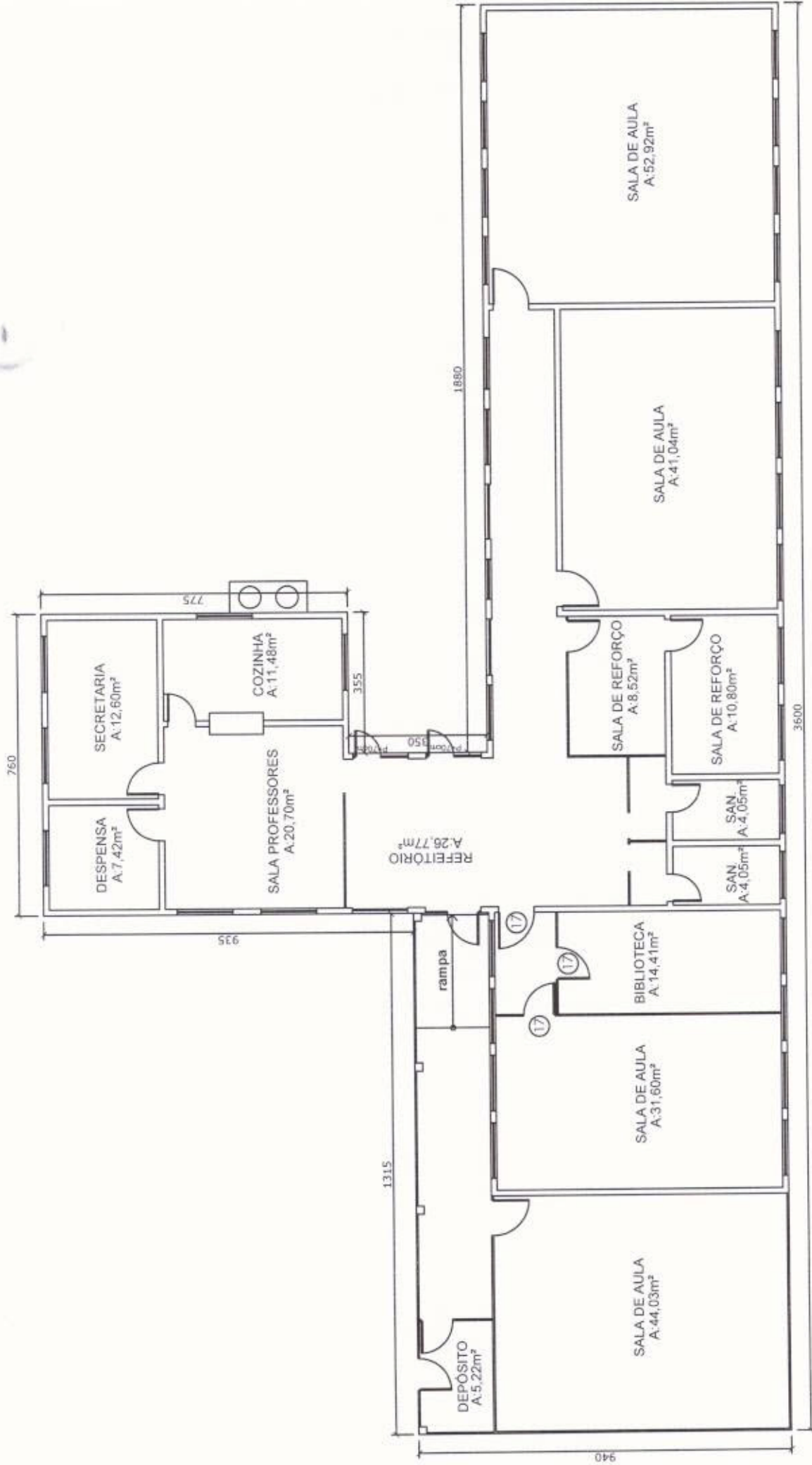
CORTE AA



E.M.E.F. DOZE DE OUTUBRO



E.M.E.F. ÉRICO VERÍSSIMO

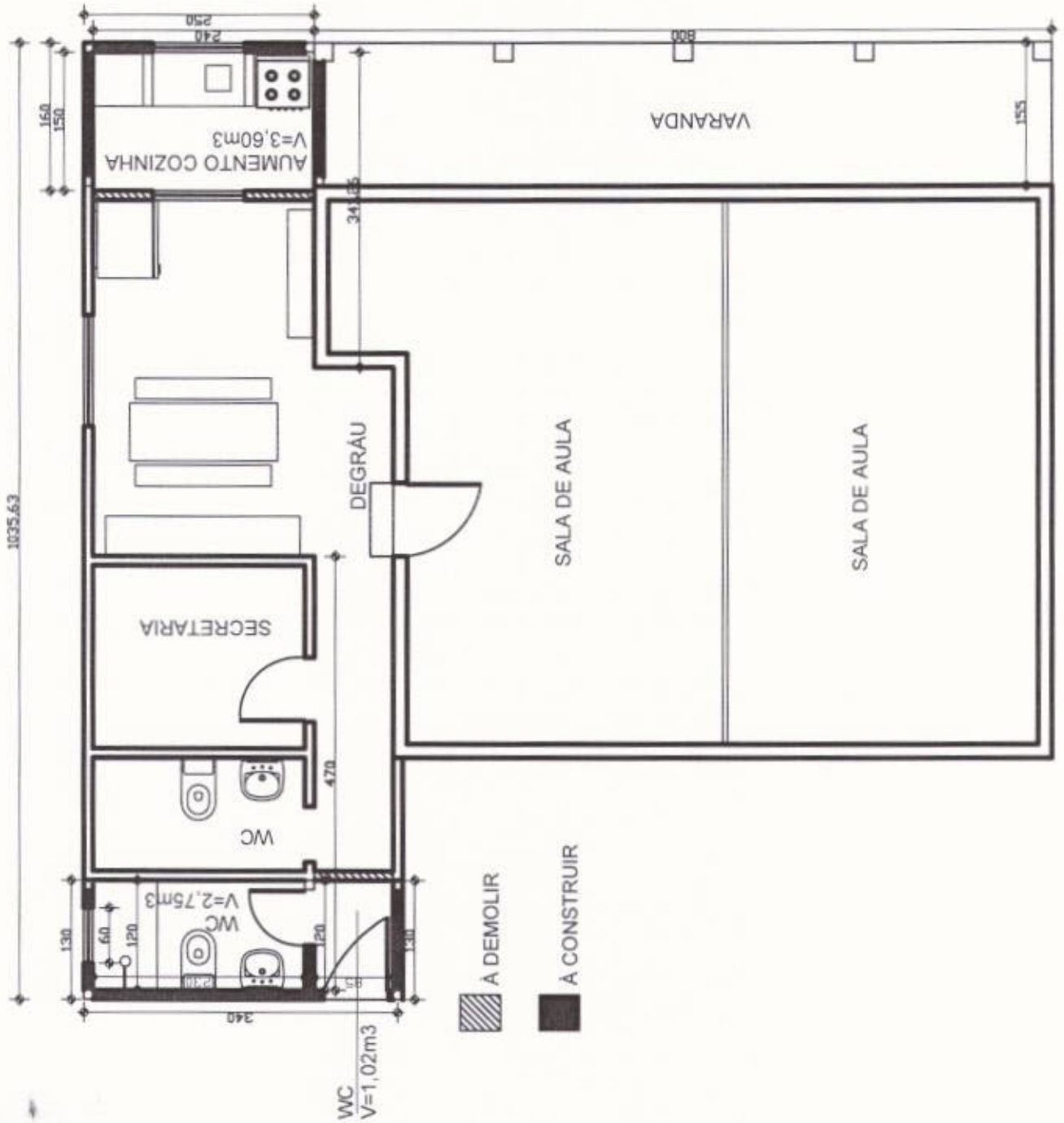


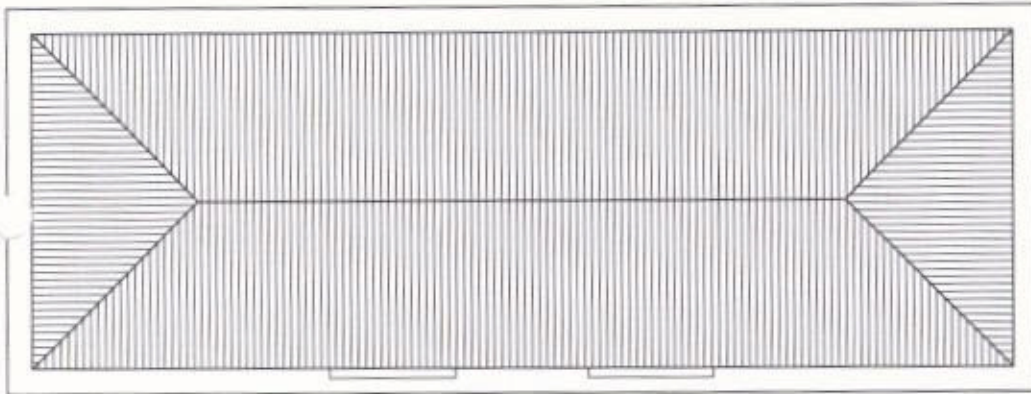
PLANTA BAIXA
ESC.1/125
ÁREA: 353.50m²

74
20/02

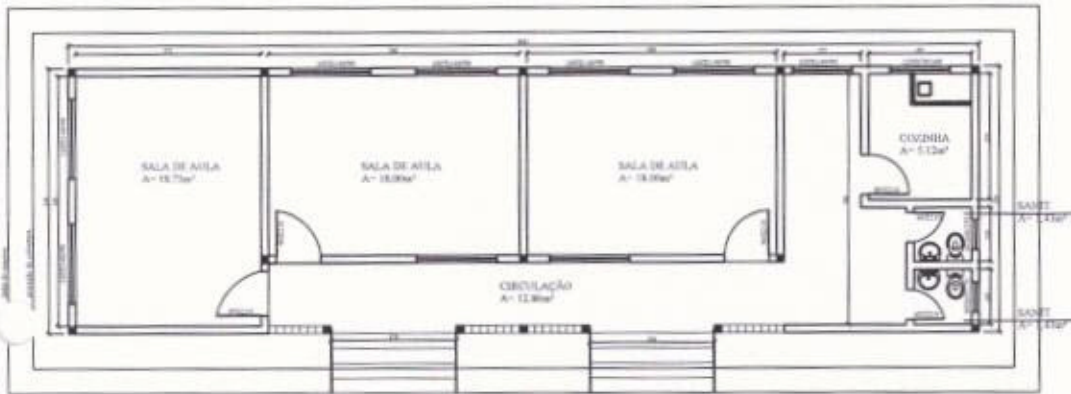
E.M.E.F. GUILHEME KAMPGEM

1035,63





PLANTA COBERTURA



E.M.E.F. HILDA LOPES
PLANTA BAIXA ARQUITETÔNICO
A=96,72m²



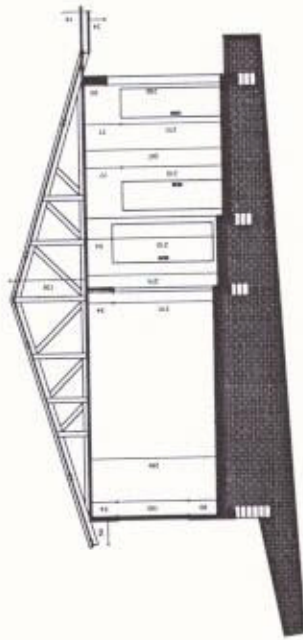
PREFEITURA MUNICIPAL DE SANTO ANTONIO DA PATRULHA
SECRETARIA MUNICIPAL DE GESTÃO E DO PLANEJAMENTO

ESCOLA M.E.F. JOSE ANTUNES DOS SANTOS

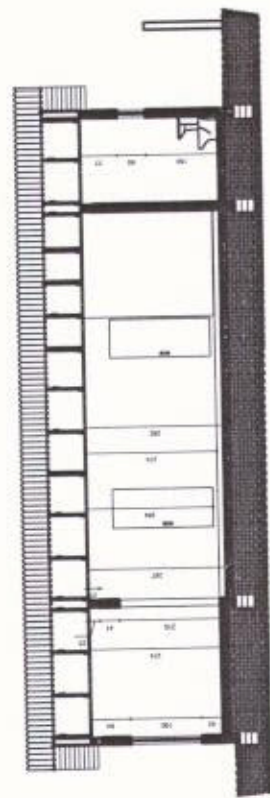
PROJETO: ESCOLA
MUNICÍPIO: SANTO ANTONIO DA PATRULHA
ESCALA: 1:50
SIT. (M.U.)

A-03

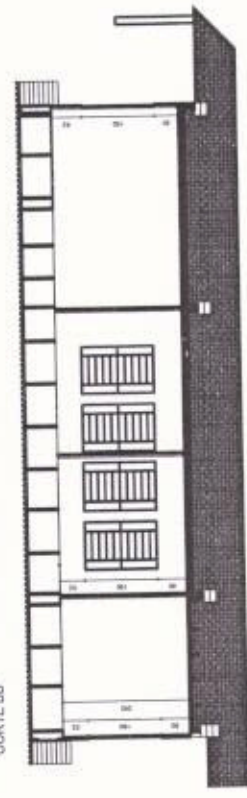
CORTES E FACHADA



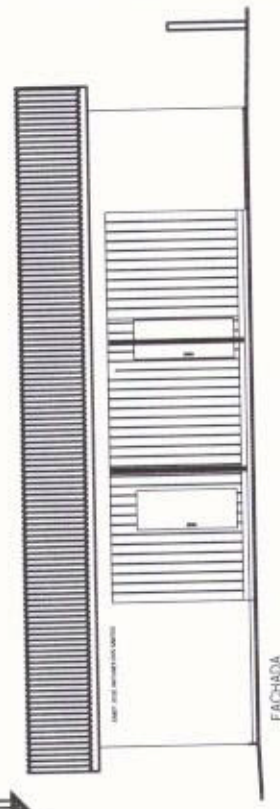
CORTE CC



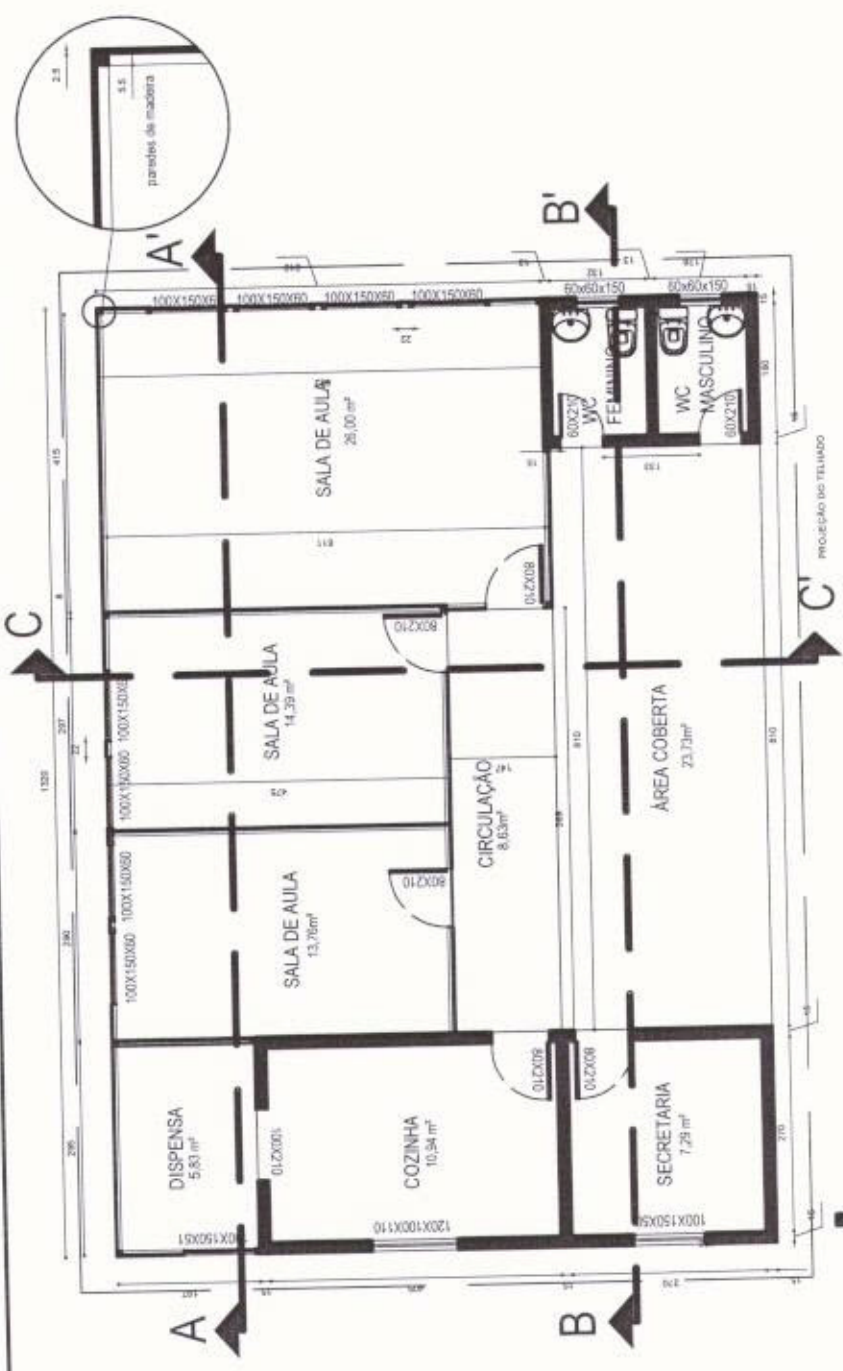
CORTE BB



CORTE AA



FACHADA



PREFEITURA MUNICIPAL DE SANTO ANTONIO DA PATRULHA

SECRETARIA MUNICIPAL DA GESTÃO E DO PLANEJAMENTO

ESCOLA M. E.F. JOSE ANTUNES DOS SANTOS

PROJETO
CONTEÚDO

PLANTA BAIXA

DATA
MAYO 2012

ESCALA
1/60

DESENHO ARLI

A-02

18

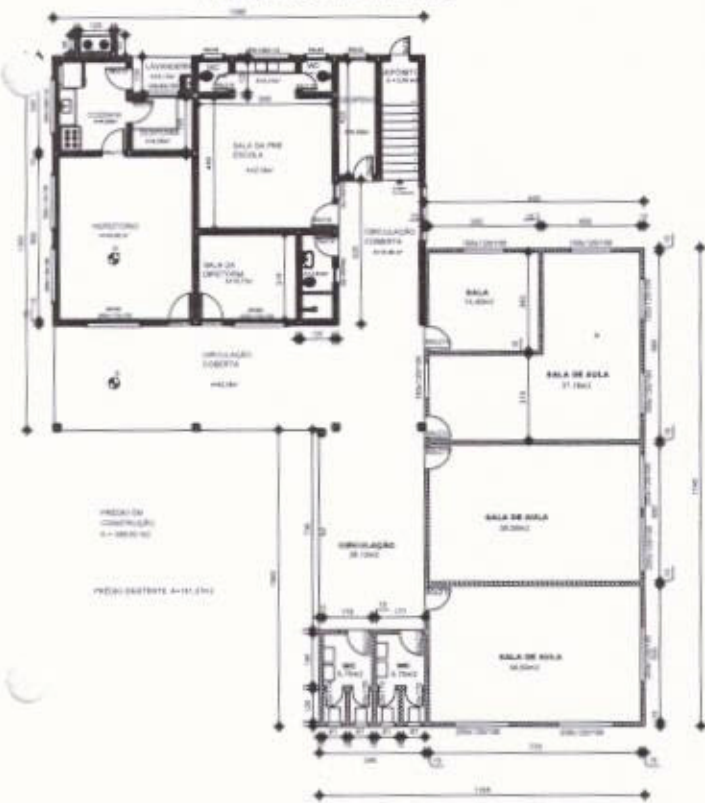
E.M.E.F. JOSÉ DE ANCHIETA



24
UD

E. M. E. F. JOSÉ INÁCIO MACHADO RAMOS

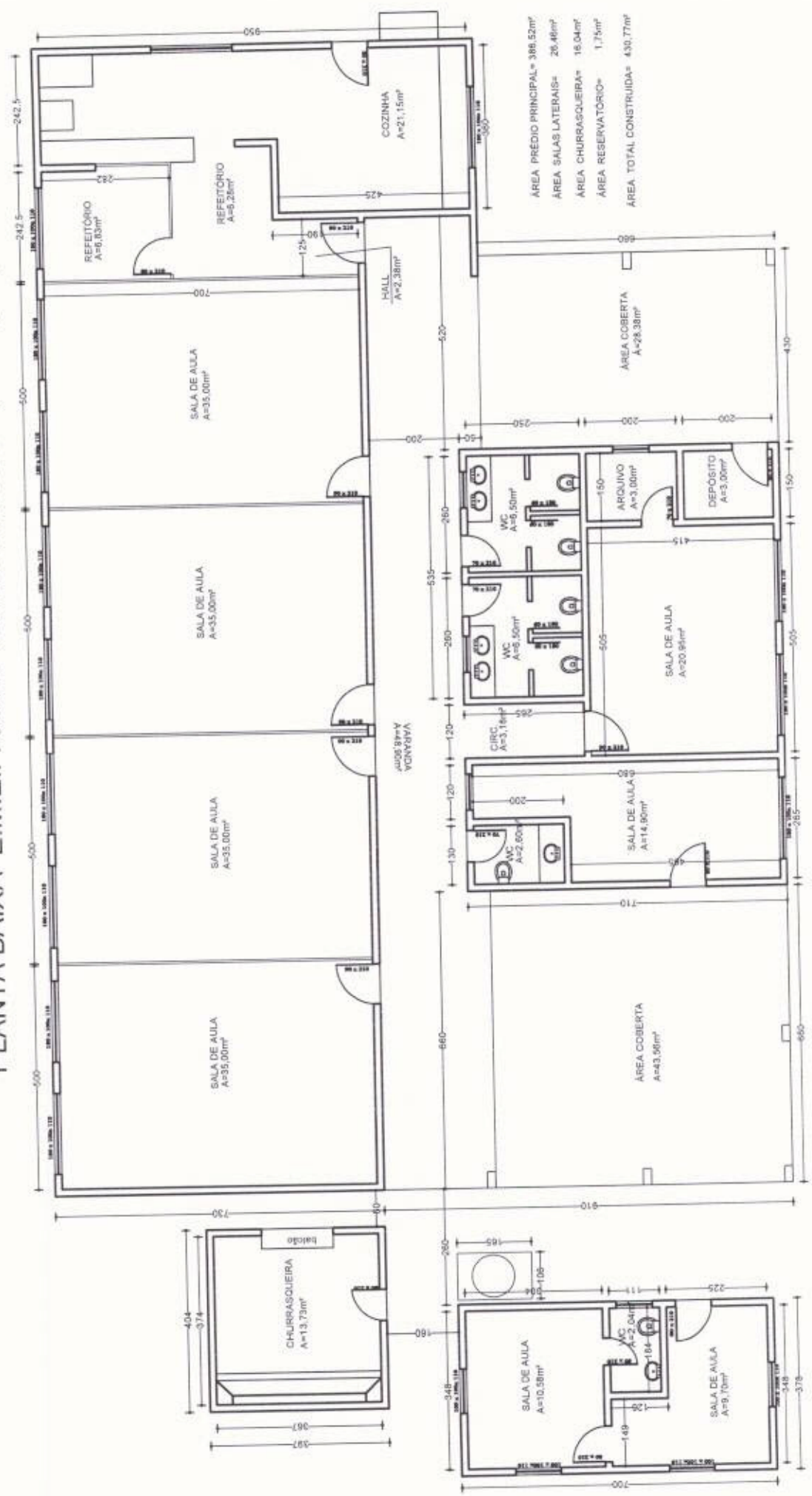
PRIMEIRO PAVIMENTO



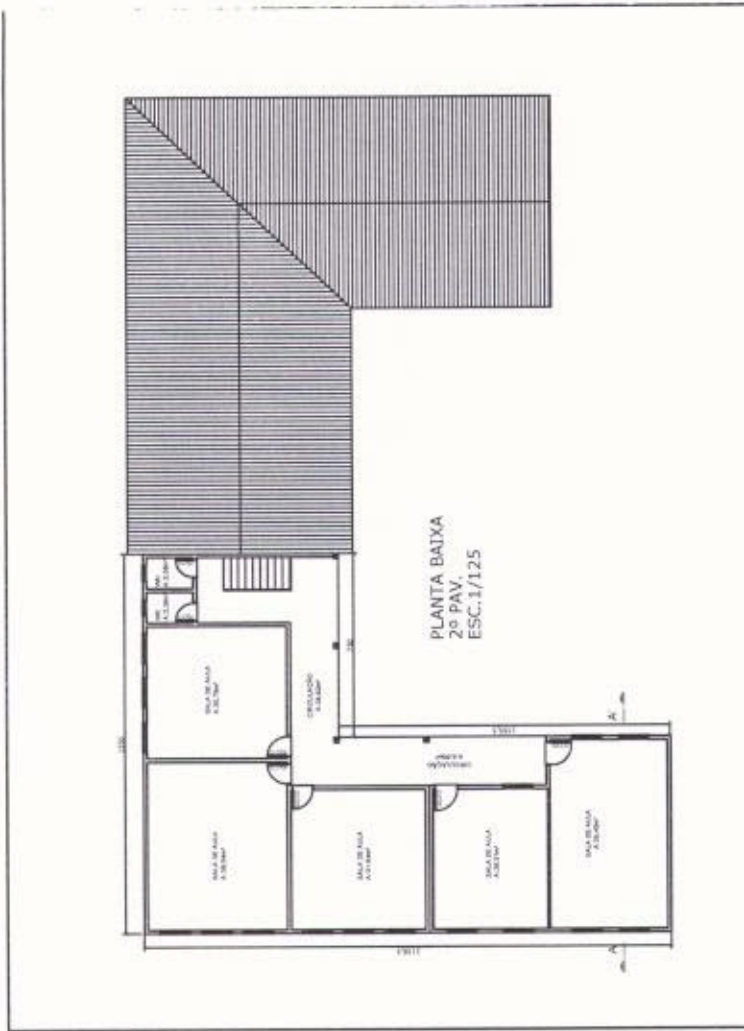
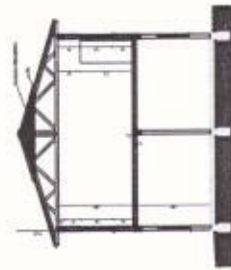
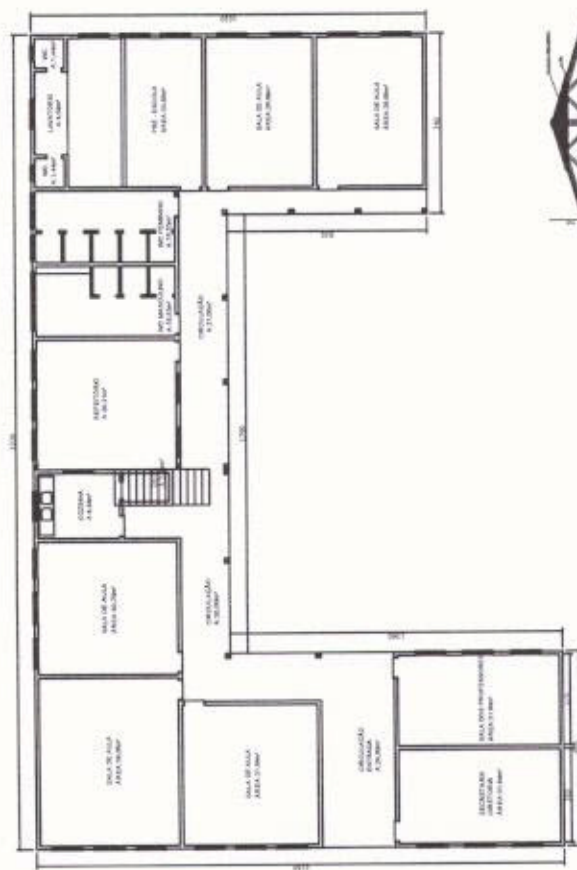
SEGUNDO PAVIMENTO



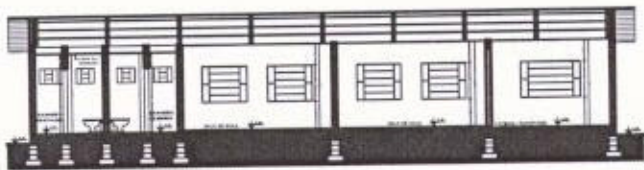
PLANTA BAIXA E.M.E.F. JOSÉ TELMO MARTINS (Cantagalo)



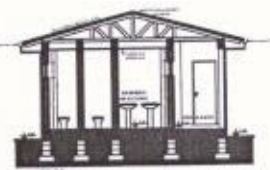
E.M.E.F. MADRE TERESA



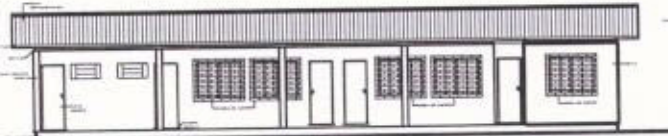
E. M. E. F. MANOEL MACHADO DOS SANTOS



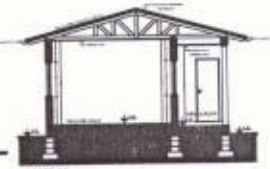
CORTE AA
ESC. 1/50



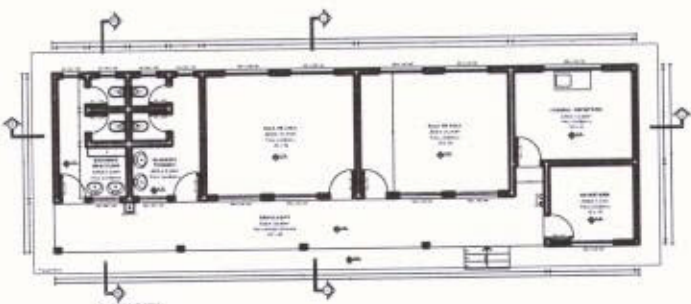
CORTE BB
ESC. 1/50



CORTE AA
ESC. 1/50

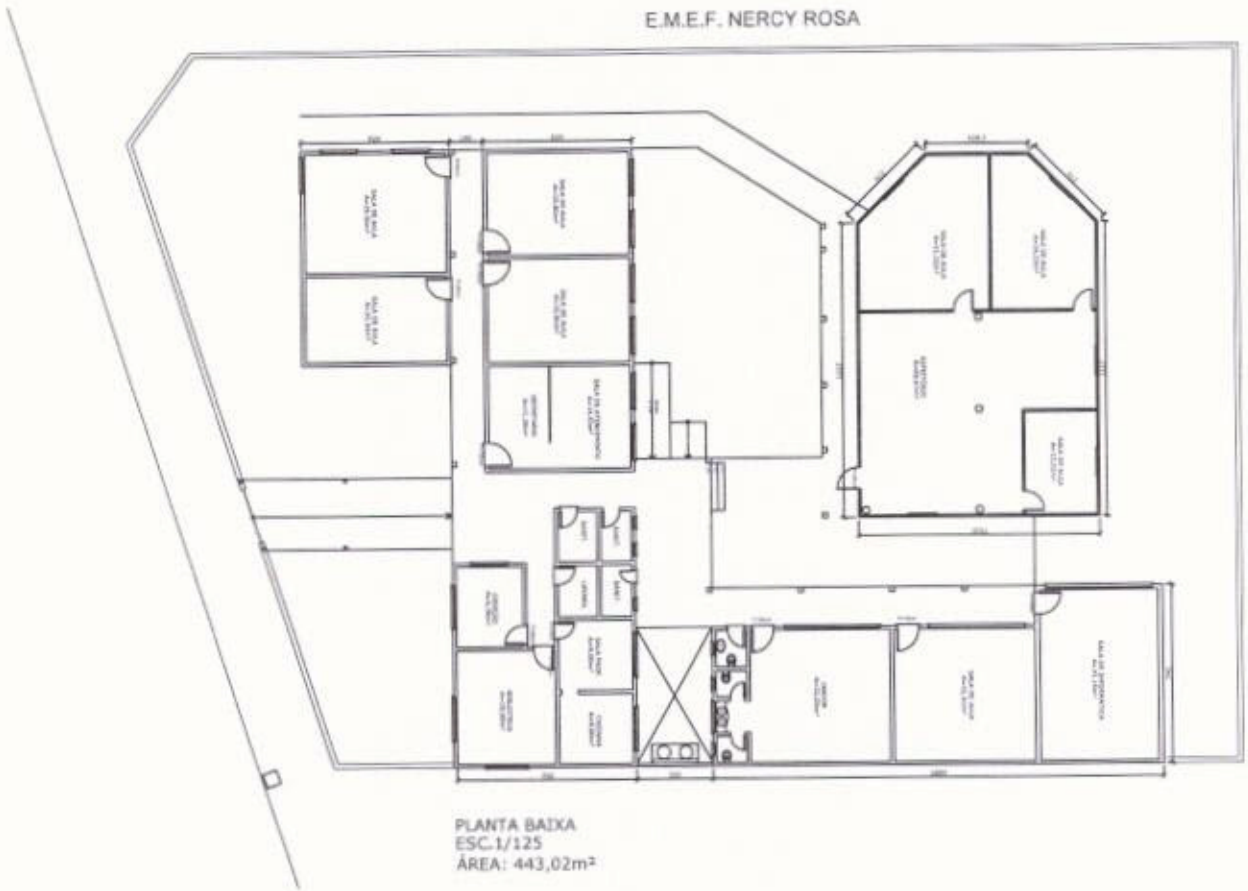


CORTE CC
ESC. 1/50



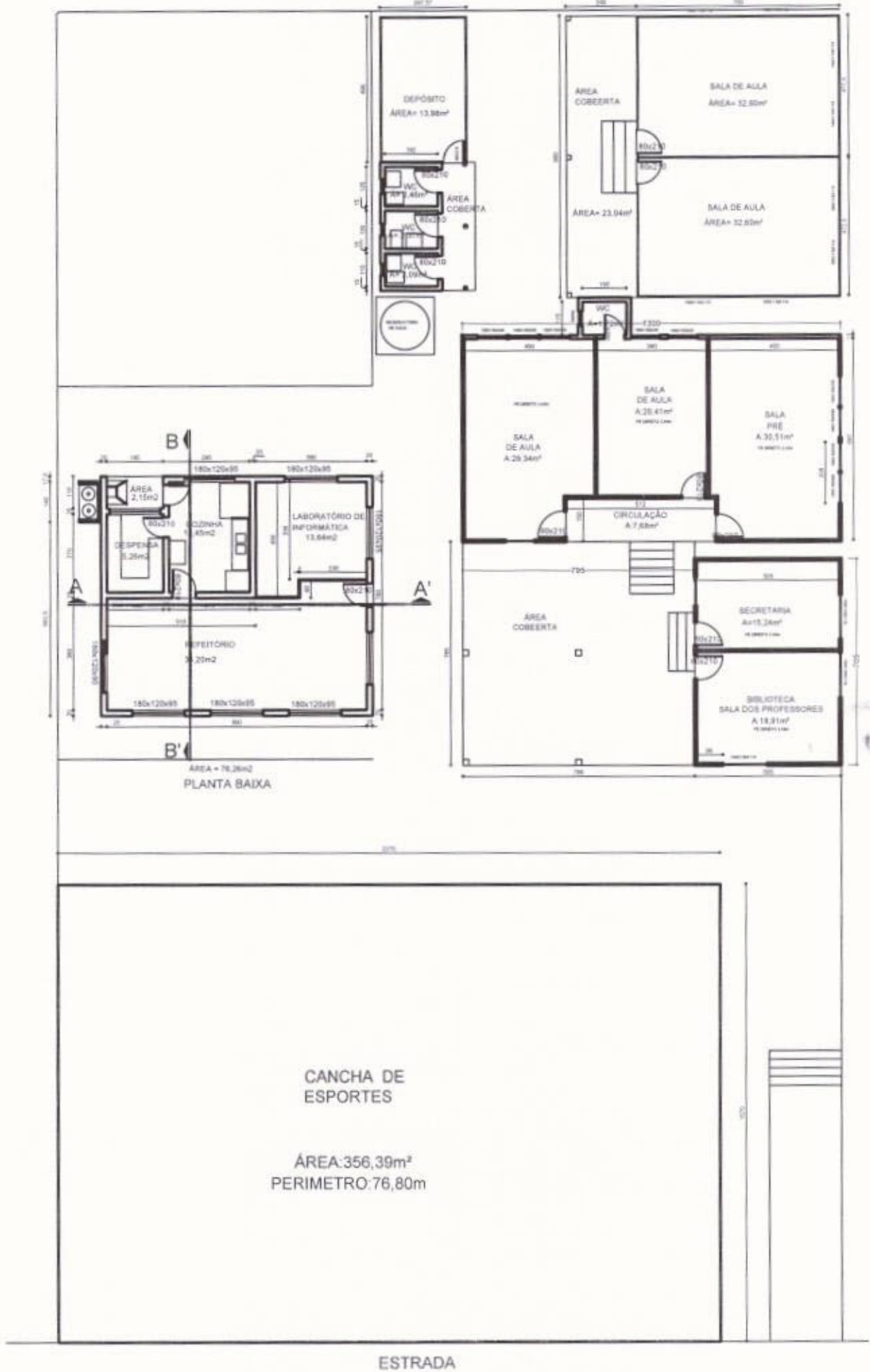
PLANTA BARRA
ESC. 1/50

E.M.E.F. NERCY ROSA

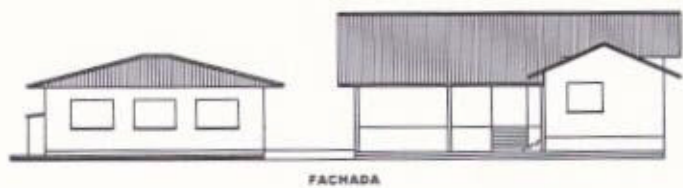


PLANTA BAIXA
ESC. 1/125
ÁREA: 443,02m²

E.M.E.F. Nossa Senhora Medianeira



ESTRADA



E.M.E.F. NOSSA SENHORA MEDIANEIRA

